

# Cub Scout Den Meeting Outline

Month: **March**

Week: **4**

Point of the Scout Law: **Thrifty**

|                          | Tiger  | Wolf   | Bear   | Webelos  | Arrow of Light   |
|--------------------------|--|--|--|--|--|
| Before the Meeting       | Gather materials for gathering and other activities, games and have home assignments (if any) ready. | Gather materials for gathering and other activities, games and have home assignments (if any) ready. | Gather materials for gathering and other activities, games and have home assignments (if any) ready. | Gather materials for gathering and other activities, games and have home assignments (if any) ready. | Gather materials for gathering and other activities, games and have home assignments (if any) ready. |
| Gathering                | Neighborhood Map   |  |  |  |  |
| Opening                  | Allegiance to the Outdoors Opening   |  |  |  |  |
| Discussion               | Look and Listen Discussion   |  |  |  |  |
| Activities               | One Foot Hike; Walk – Follow Look and Listen Discussion instructions                                 |  |  |  |  |
| Business items/Take home | None   | None   | None   | None   | None   |
| Closing                  | Secrets of Nature Closing  |  |  |  |  |
| After the meeting        |  |  |  |  |  |

**Materials:**

Gathering: paper, pencils, colored pencils/crayons

Opening: flag, opening word strips

Discussion: instructions

Activity: One Foot Hike - yarn, paper, pencils

Closing: none

Home assignments: See Home assignment sheets.

Advancement:

Tiger - Backyard Jungle 1, 2, 5

Wolf – Paws on the Path 7, 8; Call of the Wild 3

Bear – Fur, Feathers, Ferns 1

Webelos – Into the Woods 2

Arrow of Light – Into the Woods 2

# Neighborhood Map

## Materials:

- Paper
- Pencils
- Crayons



Cub Scouts need to draw a map of their neighborhood. This map should include the following:

- Natural features (lakes, streams)
- Manmade features (roads, parks, houses, stores, other buildings, etc)
- a key or legend of map symbols (see below for more information)
- show which direction north is on the map

## Map Key or Legend

A map symbol is a drawing or sign that stands for a real place or thing. A map key or legend is a list of symbols (usually inside a box) so that anyone looking at your map can easily determine what the symbols mean. Squares and rectangles can be buildings; thick lines can be streets. A circle can be a lake; a star on a square can be where your house is.

Some examples of Map Keys or Legends:



# Allegiance to the Outdoors Opening

**Cubmaster:**

We are coming up on the time of the year when we use the outdoors more, rather we are hiking the trails of America or just going to the park. Each of us, as Cub Scouts, owes an allegiance to the outdoors just as we do our flag. Each Cub Scout should know and understand the Outdoor Code.



**Cub Scout # 1:**

As an American, I will do my best to be clean in my outdoor manners; I will keep my trash and garbage out of America's waters, fields, woods and roadways.

**Cub Scout # 2:**

Be careful with fire; I will build my fire in a safe place and be sure it is out before I leave.

**Cub Scout # 3:**

Be considerate of the outdoors; I will remember that the use of the outdoors is a privilege I can lose by abuse.

**Cub Scout # 4:**

And be conservation minded; I will learn to practice good conservation of soil, waters, forests, minerals, grasslands, and wildlife and I will urge others to do the same.

**Cubmaster:**

Please join with me in saying the Pledge of Allegiance.

## **Allegiance to the Outdoors Opening – Word Strips for Cub Scouts to read**

### **Cub Scout # 1:**

As an American, I will do my best to be clean in my outdoor manners; I will keep my trash and garbage out of America's waters, fields, woods and roadways.

### **Cub Scout # 2:**

Be careful with fire; I will build my fire in a safe place and be sure it is out before I leave.

### **Cub Scout # 3:**

Be considerate of the outdoors; I will remember that the use of the outdoors is a privilege I can lose by abuse.

### **Cub Scout # 4:**

And be conservation minded; I will learn to practice good conservation of soil, waters, forests, minerals, grasslands, and wildlife and I will urge others to do the same.

# Look and Listen Instructions

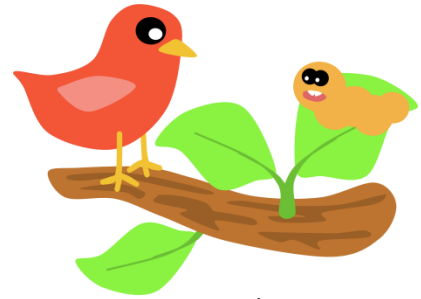
## Materials:

None

## Instructions:

Explain that once they finish their other outdoor activity (1 Foot Hike), they will go on a small walk around the school.

What kinds of animals, plants and insects live in our area of Houston?  
[robins, cardinals, mockingbirds, blue jays, red squirrels, gray squirrels, cockroaches, mosquitoes... ] What else do you see? How can we tell different birds and animals apart?



grasshoppers,

They need to look and listen while they are outside. Look for signs of spring, signs of plant life, signs of animal life. Look at the trees – are the leaves starting to come? Look closely. What bugs are in the grass or dirt? What bugs are on the branches? Are there any birds in the sky? What do you see up in the trees? What kinds of trees do we have around here? [pine, oak, maple, etc] How do we tell different trees apart?

What do you think you'll be able to hear? Listen for birds. Listen for animals (dogs, cats, etc). Can we hear the wind? (As a group will have to be quiet as we walk so that we can hear. )

**Remind each group of Cub Scouts what they can be looking or listening for as they go outside.**

**Tigers** – Look for two different kinds of birds. Pick out two sounds from nature they hear during their time outside.

**Wolves** – Try to name two birds, two insects and two animals that live in your area. Look for them as you are outside. [They don't have to see them on this walk.]

**Bears** – Identify 6 signs that any mammals, birds, insects, reptiles or plants are living nearby.

**Webelos/Arrow of Light** – Start to identify 6 trees common to their area. How do humans and wildlife use the trees? Is the bark the same on all trees? Are leaves all the same? What plants are common to their area? Have them think about how trees help the environment.

# One Foot Hike

## Materials:

4 ft piece of yarn

Paper

Pencil

Ruler

## Instructions:

Have each Cub Scout do the following outside in the grass.

1. Make a square that is 1 foot long on each side.
2. Look closely at what is inside the square you just made. It might be small, but there is a whole world of activity happening in there. Do you see any bugs or bug homes? Do you see signs of animal food (has anyone tried to eat the grass?). Is there any litter?
3. Write down the things you find in your square .

*A Scout is clean. Be sure to clean up your square.*



## Secrets in Nature Closing

### Cubmaster:

No matter where you live, there is a world of undiscovered secrets of nature waiting to be explored. Farmers and naturalists are students of nature. A naturalist stands like Columbus on the prow of his ship, with a vast continent before him. The main difference is that the naturalist's world can be at his feet. It is as near as your back yard, a nearby park, the woods, or the fields of a local farm. All kinds of insects, birds, plants, and other forms of life inhabit these lands. Continue exploring the world of nature and you will find many wonderful things that we have on this earth to enjoy.

